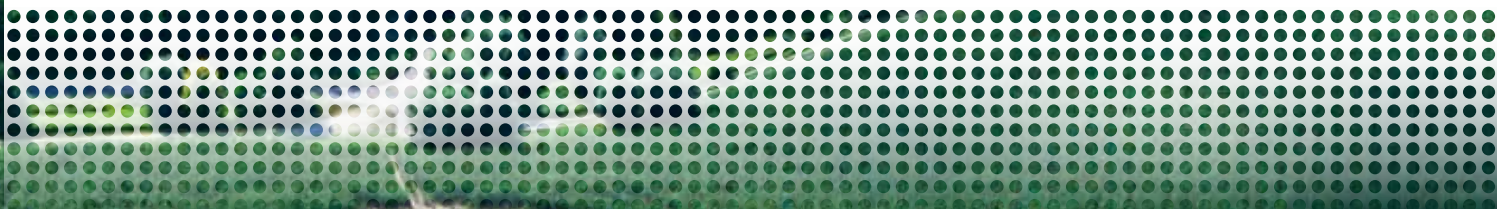


# Ready for INSPIRE



Data transformation, construction and operation of INSPIRE nodes, geoportals and web apps



# Data transformation, construction and operation of INSPIRE nodes, geoportals and web apps

In 2007, the European Commission adopted the Directive 2007/2/EC – Infrastructure for Spatial Information in Europe, or INSPIRE.

Since then, the member states of the community have been working full steam to provide environmentally relevant, interoperable spatial data, along with the associated meta-information, in a step-by-step process by 2020. The goal is to simplify the international use of spatial data in Europe and to create a basis for political decisions.

The provisions of the EU directive are implemented in national laws of the member states, and some INSPIRE nodes are operational at federal, state and local authority level, while the number of published INSPIRE services for metadata and spatial data is increasing rapidly.

With SDI and INSPIRE, con terra has a complete and future-proof product and service offering that covers the fields of spatial data infrastructures and INSPIRE

## INSPIRE quick check and implementation recommendation

- Determination of customer's particular INSPIRE requirements; conducting a target-performance analysis to identify at what points it is necessary to take action
- Presentation and discussion of concepts for hosting INSPIRE services
- Outline concept of necessary technical INSPIRE components, taking into account IT, organisational and economic boundary conditions

## Technical and architecture consulting

- Construction and operation of INSPIRE nodes (operational model, INSPIRE components and services, securing, monitoring)
- Harmonisation of INSPIRE data
- INSPIRE solution (metadata searching, geovisualisation)
- INSPIRE managed services

## Construction of INSPIRE nodes

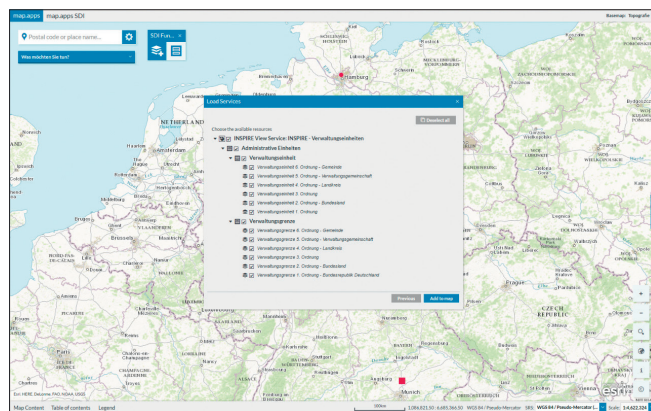
con terra uses its own custom-tailored and matured standard products for the construction of INSPIRE nodes along with those of market leaders Esri and Safe Software. The INSPIRE nodes can either be operated directly in the customer's environment or hosted by con terra as managed services.

## Tailor-made solutions

Web and mobile apps are the key to exploiting the value of the SDI and INSPIRE infrastructures in the business processes of e-government and the private economy.

con terra implements industry-specific SDI and INSPIRE solutions according to customer requirements using standard products based on ArcGIS, FME and con terra technology.

con terra has at its disposal a powerful development toolkit and operating environment in the form of map.apps, which supports the configuration and development of geoportals and geo-apps for multiple terminal devices – from the desktop web app to the smartphone app.



With the addition of SDI functions for the integration of interoperable INSPIRE/OGC services and an intuitive search function for INSPIRE-compliant metadata and other indexed datasets, the requirements of users in the fields of SDI and INSPIRE have been perfectly fulfilled. Products such as smart.finder, security.manager, service.monitor, license.manager, ArcGIS for INSPIRE, FME and INSPIRE Solution Pack for FME are just the right tools for the tasks to be performed:

- Transferring existing spatial datasets into the required INSPIRE data structures
- Publication of harmonised spatial data via OGC and INSPIRE services
- Securing INSPIRE quality of service
- Access protection and monitoring
- Creation and management of INSPIRE/ISO metadata
- Creation of metadata catalogues
- Publication of spatial data in open data portals
- Searching and visualisation of INSPIRE information in web applications and geoportals