



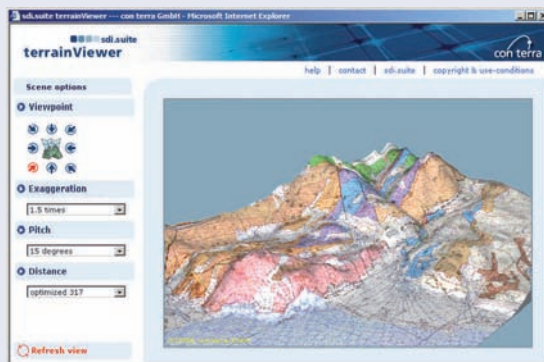
terrainServer

3D Visualisation in Spatial Data Infrastructures

GET READY FOR
INSPIRE

terrainServer – 3D Visualisation in Spatial Data Infrastructures

The terrainServer of the sdi.suite makes it possible to obtain high-performance 3D visualisations of the map services available in a spatial data infrastructure. The core component is the powerful web terrain service, which is based on the elevation data of a digital terrain model. The terrainServer drapes the 2D image data from any map service as a texture on a terrain model and makes the perspective view thus created available via a standardised service (OGC WTS) in the SDI.



3D view visualising data from the State Geological Survey of Bavaria

With the terrainViewer as a thin client, the 3D views produced from any web terrain service can be displayed in a web browser. The terrainViewer also allows the user to change interactively the perspective, the exaggeration and observation distance of the 3D scene.

Based on the principles of a distributed spatial data infrastructure and the standards of the Open Geospatial Consortium (OGC), the terrainServer supplies extraordinarily realistic 3D visualisations. The combination of thematic data and morphology considerably increases the ability to evaluate each spatial situation.

The provision of 3D views for WMS-based map services constitutes a real plus for web applications and geoportals. The areas of application range from geo-scientific specialist applications and tourist information systems to the marketing of real estate properties.

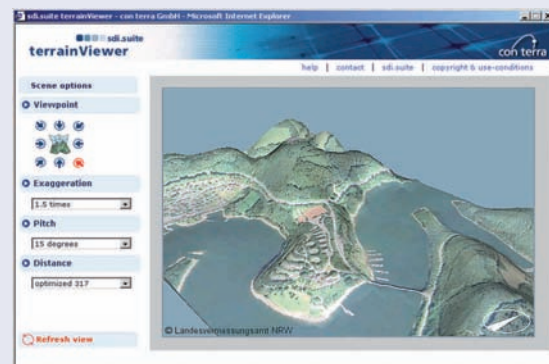
terrainServer and terrainViewer – Features

- > Full support for OGC Web Terrain Service interface (OGC WTS)
- > Texturing of the respective terrain model using OGC WMS, ArcIMS services or any other map service
- > High performance thanks to powerful rendering engine
- > Thin HTML client based on JSP and Java 2 with an intuitive user interface
- > Easy integration in existing web applications and geoportals
- > Direct linking with the sdi.suite mapClient

Additional services provided by con terra

- > Consultancy service for the construction of spatial data infrastructures based on international standards
- > Implementation of geoportals, OGC services and SDI applications
- > Development and adaptation of specialist applications
- > Hosting of geo-webservices and applications
- > Training, maintenance and support

All technical specifications subject to change without notice. Errors excepted. All software names stated are the trade names and/or trademarks of the respective manufacturer. © con terra GmbH 2007



**Gesellschaft für Angewandte
Informationstechnologie mbH**

Martin-Luther-King-Weg 24, 48155 Münster, Germany
 ☎ +49.251.7474-0 ✉ conterra@conterra.de
 🌐 www.conterra.de, www.sdi-suite.com