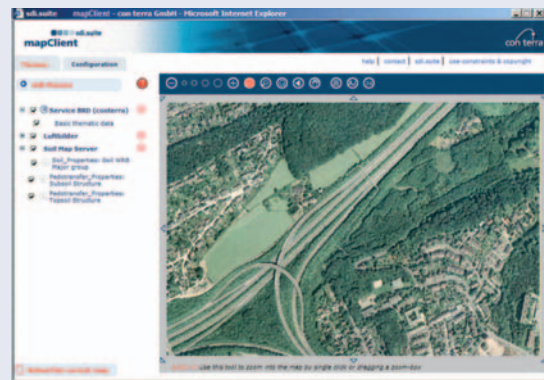
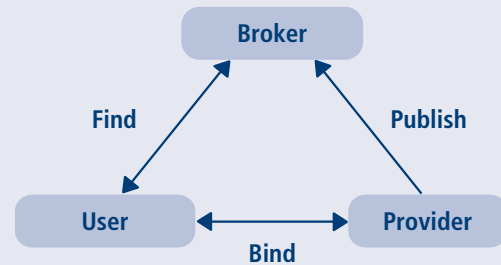




The software framework for the
development of spatial data infrastructures

The sdi.suite provides a software framework for developing and managing regional, local and organisational spatial data infrastructures (SDI). The core of the sdi.suite comprises components which enable the provision and management of a high quality services, data and applications network based on international standards (OGC, ISO) in the Internet or Intranet.

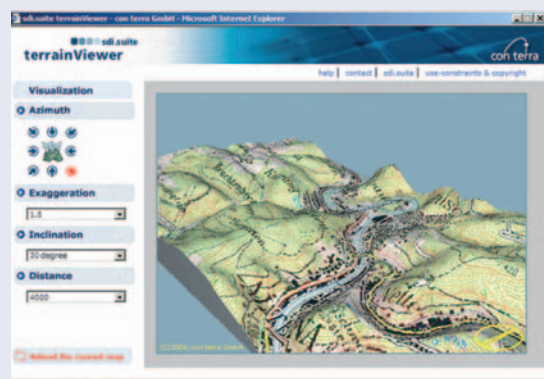


sdi.suite – Features Profile

- > Publication of geospatial resources via ISO metadata
- > Search for services, geospatial data, and applications in a SDI network via OGC Catalogue Services
- > Direct access to OGC services via web clients
- > Use of geospatial web services on mobile handheld devices via smartClient
- > Monitoring of service availability and quality via serviceMonitor
- > Integration and use of value added services
- > Development of service based specialised applications
- > Development and construction of geoportals

The sdi.suite's components are based on a common architectural model, which means that as well as interacting, they can also function independently. Basic services are incorporated via OGC interfaces in accordance with the OGC Reference Architecture for geoportals.

All technical specifications subject to change without notice. Errors excepted. All software names stated are the trade names and/or trademarks of the respective manufacturer. © con terra GmbH 2005



Additional services provided by con terra

- > Consultancy services for designing and constructing spatial data infrastructures and geoportals
- > Adaptation of existing applications
- > Hosting geospatial web services and web applications
- > Training, maintenance and support