



# mapClient

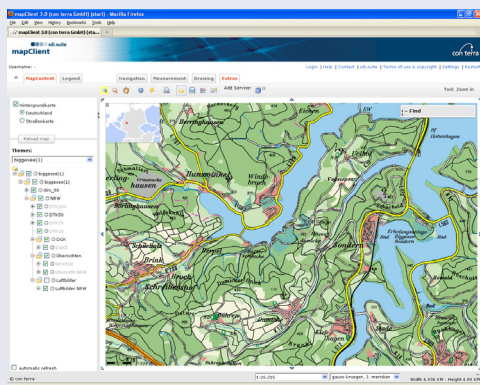
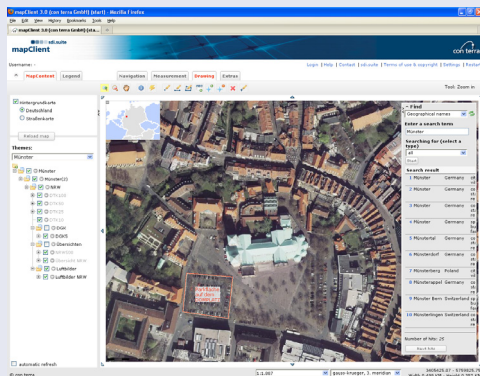
Web Application for Efficient  
Use of Geospatial Services

Version 3.0

GET READY FOR  
INSPIRE

## mapClient 3.0 – Web Application for Efficient Use of Geospatial Services

sdi.suite mapClient provides a configurable web solution that enables the efficient use of services distributed within a spatial data infrastructure. Services to be consumed may be integrated either dynamically or by configuration via standardised INSPIRE, OGC, ISO or ESRI interfaces.



The mapClient offers an extensive range of functions for representation, navigation, retrieval, selection and management of various geo-services. It supports OGC WMS, WFS and Sensor Observation Services, INSPIRE Services, GeoRSS and ArcIMS and ArcGIS Server services. Even services that are protected by a Web Security Service, or must be licensed, may be integrated within mapClient.

The redlining function allows users to create drawing and text objects and to store them with the current map as a project and reloaded. In addition, simple editing of spatial data WFS-T service can be enabled through the "wfsEditor

for mapClient" product option. Spatial searches and navigation is enabled via access to external or own (WFS-based) gazetteer services.

By connecting to an OGC Catalogue Service, required services can be searched for in context, and loaded into mapClient. This meets the needs and concepts of the INSPIRE Directive. The direct access to specific themes is possible using the integrated theme browser, a customizable favourites list and by entering a service URL. Registered services can be grouped into themes, between which the user can switch quickly.

The tabbed interface can be used to present differing functionality, layout and accessibility to content for different users or user groups. Together with the other components of sdi.suite, mapClient can be expanded on a modular basis to form part of a complete Geoportal.

### mapClient 3.0 – Features Profile

- > Dynamic integration of Map Services
- > Easy and faster access to pre-configured themes
- > Spatial reference system selection and free scale entry
- > Map navigation with gazetteer service and overview map
- > Catalogue Service interface for searching for services and displaying metadata
- > Saving and displaying map views via OGC WMC documents
- > Selection of predefined styles
- > Searching, selecting and querying features
- > Distance and area measuring
- > Printer functions for map sections (HTML and PDF)
- > Redlining and e-mail functions
- > Access to secured and licensed services
- > Portrayal Service for OGC Web Feature Services (optional)
- > Editing over OGC WFS-T interface (optional)

